

House - End Terrace

FREEHOLD



BURNHAM ROAD, DAGENHAM, RM9 4RB

Guide Price

£650,000

FEATURES

- FIVE BEDROOMS
- 21' X 20' LOUNGE DINER
- LARGE HALLWAY
- OFF ROAD PARKING
- FOUR BATH/SHOWER ROOMS
- 20' X 14' KITCHEN
- UTILITY ROOM WITH SECURITY/CAMERA SYSTEM
- PAVED GARDEN/ELECTRIC GATES



STEPS

Estate Agents

5 Bedroom House - End Terrace located in Dagenham

HALLWAY

With utility area, Oak staircase.

GROUND FLOOR SHOWER

Three piece suite.

LOUNGE DINER

21' x 20'

KITCHEN DINER

19'6 x 14'

High quality integrated appliances, central island, stone worktops. Bi-fold doors to back garden.

LANDING

BEDROOM TWO

16'4 x 10'

BEDROOM THREE

17 x 9'5

EM-SUITE SHOWER/WC

BEDROOM FOUR

16 x 9,9

BEDROOM FIVE

10 x 9'9

FAMILY BATHROOM

With bath, shower cubicle, basin and WC.

SECOND FLOOR LANDING

MASTER SUITE

17 x 16

Attic/loft storage.

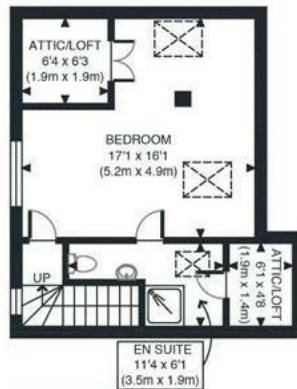
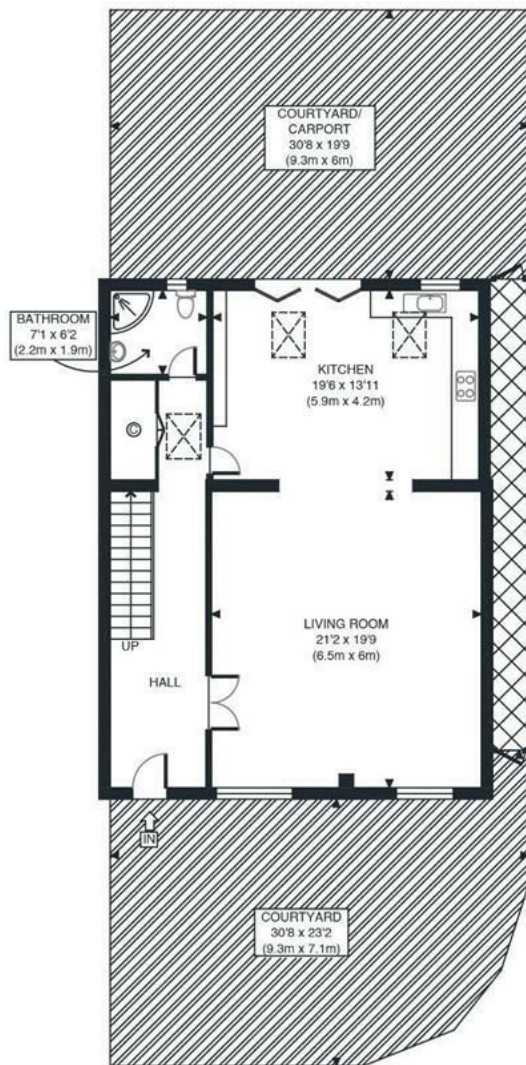
EN-SUITE SHOWER/WC

EXTERIOR

Off road parking, to front. Sliding electric gate to courtyard back garden.



DAGENHAM SALES | STEPS ESTATE AGENTS, 298 HEATHWAY, DAGENHAM, ESSEX, RM10 8LU



GROUND FLOOR
GROSS INTERNAL
FLOOR AREA 989 SQ FT

APPROX. GROSS INTERNAL FLOOR AREA WITH ATTIC/LOFT 2145 SQ FT / 199 SQM
APPROX. GROSS INTERNAL FLOOR AREA WITHOUT ATTIC/LOFT 2068 SQ FT / 192 SQM
Disclaimer: Floor plan measurements are approximate and are for illustrative purposes only.
While we do not doubt the floor plan accuracy and completeness, you or your advisors should
conduct a careful, independent investigation of the property in respect of monetary valuation

Burnham Rd

Date: 21/12/23

photoplan

Call us on

020 8593 5933

dagenham@steps.me.uk

www.steps.me.uk

Council Tax Band

D

Energy Efficiency Rating		
	Current	Potential
Very energy efficient - lower running costs		
(92 plus) A		
(81-91) B		
(69-80) C		
(55-68) D		
(39-54) E		
(21-38) F		
(1-20) G		
Not energy efficient - higher running costs		
EU Directive 2002/91/EC		
England & Wales		

Agents Note: Whilst every care has been taken to prepare these particulars, they are for guidance purposes only. All measurements are approximate and are for general guidance purposes only and whilst every care has been taken to ensure their accuracy, they should not be relied upon and potential buyers are advised to recheck the measurements.

STEPS
Estate Agents